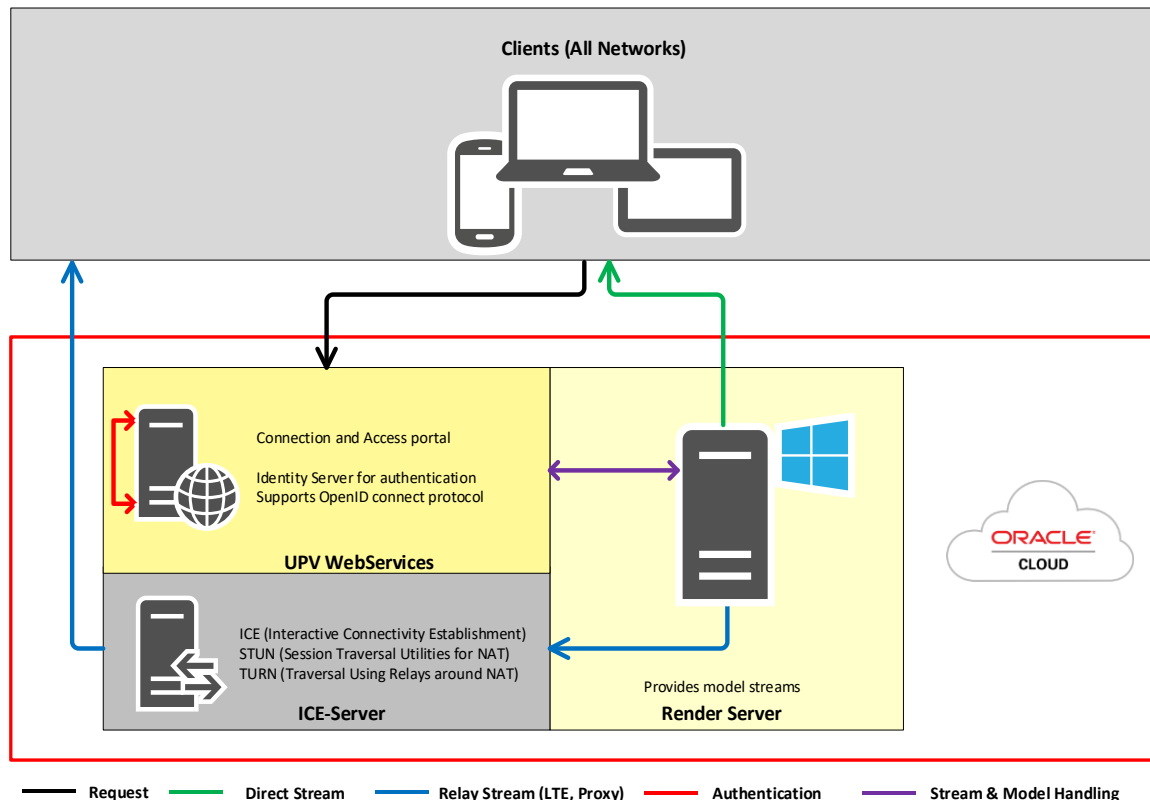


UniversalPlantViewer

UPV WebServices hosted on Oracle Cloud Infrastructure

Please find below the architecture diagram and hardware prerequisites for hosting UPV WebServices with BrowserBasedViewing technology on OCI.

Architecture for UPV WebServices on Oracle Cloud



System Prerequisites

UPV WebServices

- Hardware recommendation:
CPU 4 cores, 16 GB of RAM
- Software requirements:
MS Windows Server (IIS) or
Linux (apache or nginx)
- Ports required: TCP 443 (SSL)
- Certificate from official authority

ICE-Server (optional)

- Hardware recommendation:
CPU 2 cores, 8 GB of RAM
High bandwidth (>100Mbit bidirect.)
- Software requirements:
Linux (with coturn)
- Ports required: TCP 443 (SSL)
UDP ports depending on settings, 3 ports
per concurrent stream, e.g.:
50000 – 50300 for 100 conc. streams.
- Certificate from official authority

Render Server

- Hardware recommendation:
For apx. 8-10 simultaneous streams:
Oracle VM.GPU3.1 / 16GB GPU VRAM.
(or 2x VM GPU 2.1 / 2.x)
- For a even more streams, upscaling to
VM.GPU3.x is recommended. Multiple
render servers can be used on one
WebServices Unit for simple load balancing.
- Software requirements:
Microsoft Windows
- Ports required: Acces to ports defined for
UPV WebServices and ICE-Server

Requirements may vary with the use case. For detailed individual hardware recommendations, feel free to contact us.